

# Trail Riders Of Today

<http://www.trot-md.org/>

January 2012

Number 190

## **TROT ANNUAL MEETING, POT LUCK DINNER AND SILENT AUCTION**

**Saturday, February 11, 2012 6:00 PM**

**Mt. Airy Vol. Fire Dept. Activities Center on the Mt. Airy Fairgrounds  
Directions on page 2**

**Please bring your favorite dish of food to share according to the first letter of  
your last name**

<b>A-F</b>	<b>Salads and Sides</b>
<b>G-H</b>	<b>Appetizers</b>
<b>I-U</b>	<b>Main Dish</b>
<b>V-Z</b>	<b>Desserts</b>

**Come and enjoy lots of time for networking and meeting with friends and shopping for  
some great bargains at our fabulous Silent Auction.**

**For more information or to help set up, contact  
Priscilla Huffman at 301-646-4422 or [priscillahuffman@verizon.net](mailto:priscillahuffman@verizon.net).**

**Donations Needed for SILENT AUCTION  
(see page 3)**

### **Inside This Issue:**

Annual Dinner . . . . .	1	TROT Uses PayPal . . . . .	3	TROT License Plate . . . . .	6	Horse World Expo Ad . . . . .	10
President's Message . . . . .	2	Newsletter Options . . . . .	3	TROT Rides: A Look Back . . . . .	7	Ads . . . . .	11,12
Annual Dinner directions . . . . .	2	County Updates . . . . .	4	2011 TROT Ride Statistics . . . . .	7	Annual Membership	
Silent Auction . . . . .	3	WSSC Trail Update . . . . .	4	Trail Guides . . . . .	8	Application . . . . .	13
TROT Ride - Patuxent Park . . . . .	3	New Members . . . . .	4	Looking for Buddies/Share a		The Back Page . . . . .	14
		Holiday Horse Parade . . . . .	5	Ride . . . . .	8,9		
		TROT Ride - Anacostia Park . . . . .	6	Who's Who . . . . .	9		

## President's Message

Ron MacNab, President

### TROT WANTS YOU!

TROT Board elections will be held at our Annual Dinner on February 11, 2012. This is an all volunteer Board. It does not require special knowledge or abilities, just energy, dedication and an active interest in preserving equestrian trails and promoting trail riding. The Board oversees the governance of TROT. Board members tend to be our best volunteers and often lead TROT activities. Board meetings are held from 7 to 9 PM on the first Tuesday of each month.

If you would like to join the Board or find out more about it, please contact Kyle Jossi at **301-570-3860** or email her at [bossyjossi@verizon.net](mailto:bossyjossi@verizon.net)

Below are the relevant sections of our bylaws regarding the election and duties of the Board.

**Annual Meeting.** There shall be an annual meeting of the association during the first quarter of the membership year, unless otherwise ordered by the Board of Directors. The purpose of the annual meeting shall be to hear reports, and for the nominating committee to present a slate of directors for the coming year.

**Election.** The election of a Board of Directors shall take place at the regular annual meeting. Only members of legal voting age shall be entitled to vote on the slate of Board members presented by the nominating committee.

**Terms.** A Director shall serve for two (2) calendar years,

beginning with the first board meeting after the regular annual meeting. The term of office may be extended an additional two (2) years if so desired by the Director. Upon completion of four years, a Director may make their candidacy known to the nominating committee and stand for reelection. To maintain office, Directors are required to attend, in person or by phone, a minimum of 75% of the board meetings held in a 12-month period.

**Duties.** The Board of Directors shall have supervision, control, and direction of the affairs of the association, execute the policies and decisions of the active membership, actively promote the association's objectives, and have discretion in the disbursement of funds. It shall also determine the minimum amount of annual dues required for membership in the association. It may adopt such rules for the conduct of its business as shall be deemed advisable, and may, in the execution of powers granted, appoint committees or agents to work on specific problems or reports. The Board shall report to the membership on its activities at the annual meeting. It shall meet on the call of the President or the Secretary or on demand of 20 members of the association.

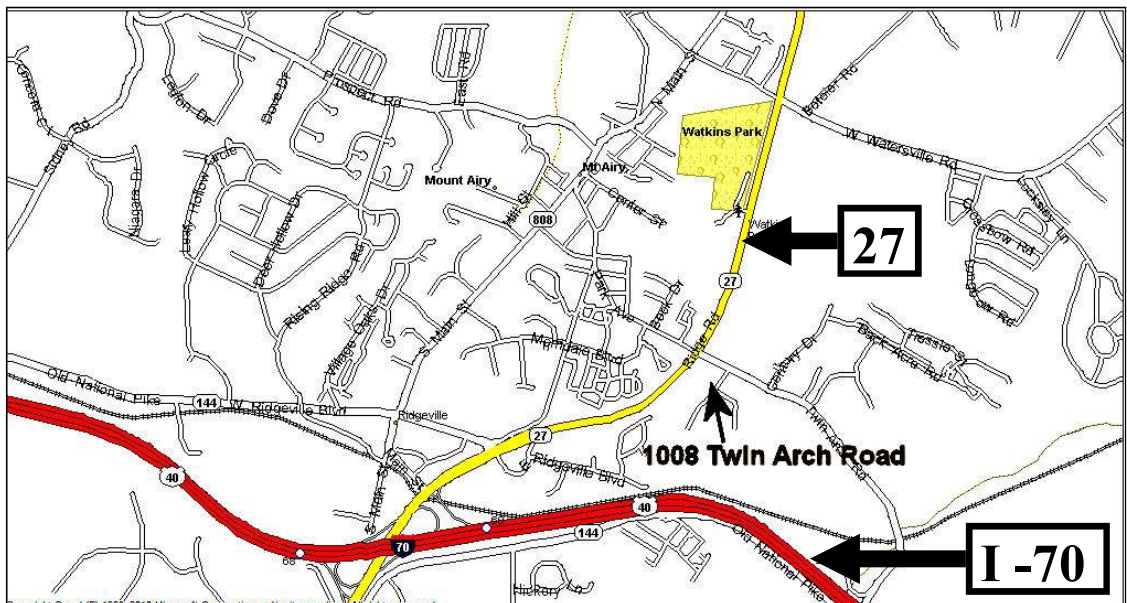


## TROT ANNUAL MEETING, POT LUCK DINNER AND SILENT AUCTION

Saturday, February 11, 2011, at 6:00 PM

1008 Twin Arch Road,  
Mt. Airy, Maryland

Directions: Route 27 north from I-70. Turn right on Twin Arch Rd. ( traffic light). (You will see the fairgrounds on the corner of Route 27 and Twin Arch.) Immediately turn right into the drive, which is lined with white fence posts. There is a brown sign on the left at the beginning of the drive "Welcome to the Mt. Airy Vol. Fire Co. Activities Grounds." The building is at the top of the drive.



## **SEEKING DONATIONS FOR SILENT AUCTION ON FEBRUARY 11, 2012!**

*Christiane Ritcher*

The TROT Silent Auction is coming fast and we need your donations to make it a successful event. Do you have some extra tack in new or excellent condition? Do you offer horse-related services or products? Do you have any horse-related item and even non-horse related items to donate? All proceeds raised from the silent auction goes to TROT. Please consider making a donation!

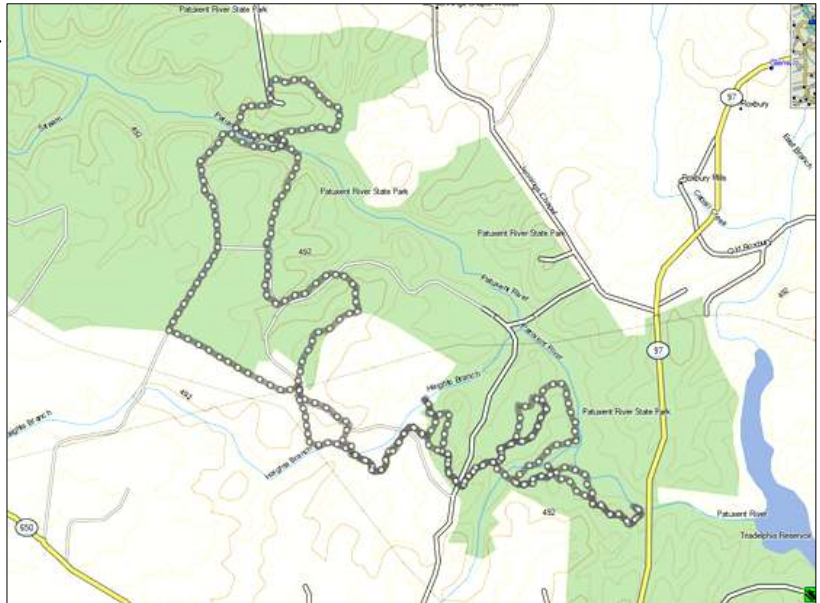
If you already know what item(s) or service(s) you plan to donate for the silent auction, please email Chris Ritcher at [lapado2000@gmail.com](mailto:lapado2000@gmail.com). The more items received before the event, the easier the planning. If you cannot bring a donation to the meeting, please contact me to arrange pickup.

## **TROT Ride - Patuxent State Park Ride,**

Sunday August 21, 2011 - Ride leader Lisa Troutman

*Lisa Troutman*

Before the ride Amy Kimble, Ron McNab, Kent Middlekauff and I, cleared a 2 mile section of trail from Georgia Avenue to Howard Chapel Road. The day of the ride was great weather calling for thunderstorms in the afternoon. Joyce Frank, Pam Howard, Sharon Cappeluti, Kent Middlekauff and I met at the parking lot off of Georgia Avenue and rode across Howard Chapel Road to Elton Farm parking lot, across the Patuxent River to trails that border Jennings Chapel Road and back again. We rode for about 3½ hours and over 12 miles of trail of beautiful trails that went through woods and open fields. The trails go near the Goshen Hounds and across the river to the beautifully maintained trails by the Iron Bridge Howard County Hounds. We left the parking lot just as a thunderstorm was approaching. Everyone had an enjoyable ride.



## **TROT Uses PayPal**

You can now join TROT or renew your membership online using PayPal. Just go to the TROT Web site ([www.trot-md.org](http://www.trot-md.org)) and click on "membership". It is fast, easy, saves time and postage.

## **NEWSLETTER DISTRIBUTION OPTIONS**

### **Electronic or Hard Copy?**

*Nancy Osgood*

TROT is dedicated to keeping its members informed and entertained by issuing this bimonthly Newsletter. We recognize that more and more information is being accessed electronically and that electronic distribution can save money for printing and postage. But we also know that many folks still prefer reading from paper copy. We would like to make sure members get the Newsletter in the format that they prefer:

1. Hard copy in the mail, or
2. Email with a color edition PDF attachment to view or print, or
3. Neither, view it on the TROT website, <http://www.trot-md.org/>

If you would like to change your Newsletter format to electronic only please contact Margaret Scarff, our membership chair, by sending her an email: [mdanews@aol.com](mailto:mdanews@aol.com). Put in the Subject Line: TROT News Electronic Only, and be sure to include your full name in the body of the email (not just your email address). Please be sure to indicate your preference on your 2011 TROT renewal Application. See Page 13.



---

## County Updates

---

### Need volunteers

as contacts or coordinators for **Baltimore, Calvert, and Talbot Counties**. If you have an interest to act in this capacity, please contact Ron MacNab, TROT President, [rmacnab@comcast.net](mailto:rmacnab@comcast.net) or call (301) 622-4157

---

### Montgomery County Report

by Ron MacNab

#### Little Bennett Regional Park

[Trails](#) are open again after the recent storms. However, the bridges are out at Wilson Mill and Beaver Valley. Also, the bridge at Kingsley School House is closed. Signs have been posted at all trailheads to be alert for possible storm damage as there are still some trees down and eroded trail areas due to runoff.

Also, portions of the Dark Branch Trail in Little Bennett Regional Park are closed due to damage and environmental resources concerns. In the future, please use the Pine Grove Trail to access the Western Piedmont Trail from the Prescott Road parking area.

Be careful when riding on bridges and wooden walkways. Wet leaves are slippery. A few weeks ago a horse fell and was injured.

Do not ride on closed trails. Horses recently went on a closed trail that was under construction. Ignoring the signs, these riders ruined many hours of paid and volunteer labor that was spent preparing the trail surface.

#### Woodstock Equestrian Park

The second phase of building Woodstock Equestrian Park has begun. It includes a large fenced outdoor riding ring with terraced seating and berms, an expanded parking area, a working well with three frost-free hydrants, renovation of a garage/barn structure for storage of jumps and maintenance equipment, a gravel service drive for maintenance, a stone dust trail from the parking lot to the new ring, and directional and wayfinding signage. This project is funded for design and initial construction limited to the available funding of \$750,000. Construction is expected to be complete by late Spring 2012.

The restoration of the Seneca Stone Barn at Woodstock Equestrian Park, received the 2010 Montgomery County Executive's Award for Historic Preservation.

---

### WSSC Trails Update

Barbara Sollner-Webb

Wonderful TROT members continue working to encourage the re-opening of WSSC's environmentally sound Rocky Gorge equestrian trail -- including many eloquently testifying at WSSC's November Commissioners' Meeting. Since our last report, a number of elected officials and their spouses have ridden the equestrian trail with us and have all been impressed that it is minimally eroded and does not run along the water. They have also noted the steepness and bad erosion throughout much of the access road (a.k.a. "firebreak", to which WSSC has officially moved summer riding). These elected officials say they will help our cause, and we believe their intent, but the political process may take unfortunately long. Several WSSC Commissioners also appear sympathetic.

In the interim, TROT members made a major environmental offer to WSSC. The idea came while riding WSSC's access road and noting its badly blocked culverts -- these should

carry water below the road, These wash-outs deliver much more sediment directly into the reservoir than could ever come from the equestrian trail, so TROT members offered to clear the culverts. WSSC held a reservoir cleanup. The effort (attended by 14 TROT members, including TROT's president and many on TROT's board, plus one other local resident and three WSSC employees) was extremely successful: we re-opened three badly blocked culverts and re-routed a damaging spill-over. The following month, WSSC held two more culvert work-sessions that were very well attended by numerous equestrians and others, and again were successful. Re-opening blocked culverts and thereby averting impending wash-outs of the access road is very rewarding, and hopefully it will show WSSC that equestrians do care about the reservoir and are willing to participate in its stewardship.

While this WSSC trails process continues to play out, please continue to notify your elected officials that you do care, and please also come out to WSSC's culvert re-opening sessions planned to resume next spring.

---

### Please Welcome TROT's New Members

*Margaret Scarff, Membership*

Esme and Moti Bordeley	Wilton	CT	Fairfield County
Gretchen Mobberley	West Friendship	MD	Howard county
Velia Mitro	Bethesda	MD	Montgomery County
Jeanette Lloyd	Hamilton	VA	Loudon county
Martin(Butch) and Crystal Myers	Falling Waters	WV.	Berkeley county

# Lisbon, Maryland Holiday Horse Parade

*Contributed by Pat Oliva*

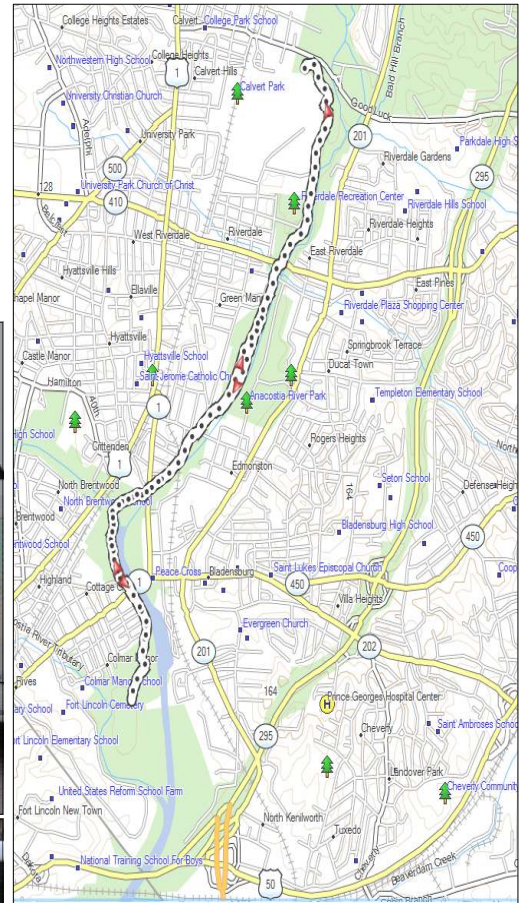
An Old Fashion Holiday Horse Parade was held in Lisbon, Maryland, on December 10 – and TROT was there! The parade was held for a great cause – proceeds benefited the Howard and Carroll County food banks. As our own Pat Oliva said “the parade was unbelievable – over 250 horses! Anne Bennof came up with the idea of everyone wearing TROT jackets - and we sure looked smart! “What a great way to celebrate the holidays!”





Saturday November 26<sup>th</sup>, Ride leader John Angevine  
*Lisa Troutman*

This was a great TROT trail ride that closed out our ride season. There were 14 riders that attended the ride. We parked at the ice skating rink in College Park and rode almost all the way to DC. We were all amazed with the spacious trails and beautiful scenes along the Anacostia River so close to downtown DC. The trail is along a mixed use trail that had some asphalt, went under and over bridge passes and through some open grassy ways. We encountered hikers, bikers, and several children that were thrilled to see us. We also saw blue herons and ducks along the river. The trail provides a scenic view of the historic Lincoln Cemetery. It's a wonderful ride so close to DC inside the beltway.



**The TROT license plates are in,** we have ours and they look great! Many thanks to Susan Railey who worked very hard and navigated the bureaucracy of the Motor Vehicle Administration to get our great organizational plates with the TROT logo. If you missed out – it is not too late. Email Susan ([susanrailey@verizon.net](mailto:susanrailey@verizon.net)) and she will get an application to you. Return the completed application to her with the fee (only \$25), and she will forward it on to the MVA.

Oh – and be sure to honk and wave if you see a fellow TROT member on the road!



# TROT Rides: A look back over the 2011 Trail Riding Season

Lisa Troutman

Thank you to all the trail ride leaders for 2011! With your help and dedication, we had a very successful year. We had 18 planned rides. Our trail ride leaders were Suzanne Anderson, John Angevine, Andrea Caplan, Jacquie Cowan, Jeff Dwyer, Nancy Harmon, Terry Ledley, Naomi Mander, Deneen Martin, Marilyn Miller, Karen Penharlow, Mary Prowell, Christiane Ritcher, Katie Tessier, Lisa Troutman, Barbara Sollner-Webb and Denis Webb. Unfortunately this past year we had wet, rainy conditions both in the Spring and Fall that limited some of our trail rides. We also had extreme heat in July that prevented the Codorus State Park ride from going on as planned. Look for a makeup ride next year!

In 2011 we had rides in Montgomery, Howard, Carroll, Prince Georges, Anne Arundel, Harford, and Baltimore

Counties. The rides varied from our largest ride at Liberty Reservoir with 24 riders, to our smallest rides, at the Naval Academy Dairy Farm and Patuxent State park with 5 riders each. The larger rides always had multiple groups, typically a walk only group, a walk/trot group, and a faster group. The smaller rides pace was based upon the participants with most being walk/trot. Many rides included a pot luck lunch or a gathering afterward to share stories about the trail or other riding stories. It's a great way to meet other people that share the same passion of trail riding.

Please consider being a trail ride leader in 2012. We encourage you to lead a ride on any trail system you would like to share with others. The more trails TROT knows about, the more we can help protect them. You can specify the ride any way you like. This includes pace, distance and number of participants. Please contact Lisa Troutman at [cat.home@verizon.net](mailto:cat.home@verizon.net) or at 410-489-5101 if you'd like to lead a ride in 2012.

TROT Rides 2011				
Location	Date	# of Horses	# of groups	Ride Leaders
North Tract	Saturday March 26	15 horses	2	Barbara Sollner-Web
Woodstock Equestrian Park	Sunday, April 10,	23 horses	3	Lisa Troutman and Andrea Caplan
Naval Academy Dairy Farm	Saturday April 16	5 horses	1	Jeff Dwyer
Gunpowder Falls State Park	Saturday, April 23	7 horses	2	Karen Penharlow
Rocky Gorge Watershed	Saturday May 14,	16 horses	2	Terry Ledley, Barbara Sollner-Webb
Agricultural Park	Saturday May 21,	20 horses	3	Deneen Martin
Susquehanna State Park	Saturday June 4,	8 horses	1	Karen Penharlow
Callithea Farm	Saturday June 11,	8 horses	1	Naomi Manders
Liberty Reservoir	Sunday July 10,	24 horses	3	Mary Prowell
Patuxent State Park	Sunday August 22,	5 horses	1	Lisa Troutman
Patuxent State Park	Saturday October 8,	8 horses	1	Suzanne Anderson
Patuxent State Park	Sunday October 9,	11 horses	1	Suzanne Anderson
Agricultural Park	Sunday October 23,	8 horses	1	Christiane Ritcher
Anacostia Park	Saturday November 26,	14 horses	1	John Angevine
Number of rides		14 rides		
Average # of horses		12 horses	1.5 groups	
Cancelled rides				
Codorus State Park, Hanover, PA - Saturday July 23 - CANCELLED DUE TO EXTREME HEAT !!!!				
Rockburn Regional Park into Patapsco Valley State Park-Sunday August 7 - CANCELLED DUE TO WET CONDITONS				
RT & 3L Farm - Saturday August 27th. CANCELLED for JPR				
Catocin Mountain Park Saturday September 24, CANCELLED DUE TO WET CONDITIONS				
14 held + 4 cancelled = 18 rides				

## Trail Guides

The following volunteers are willing to show TROT members their favorite trails on an individual basis. Contact them to arrange a personal guided trail ride.

**Benson Branch Park** Sandy Brewer  
Email [sandbrewer@aol.com](mailto:sandbrewer@aol.com)

**Blockhouse Point (Farm Loop on Canal at Violettes Lock)**  
Naomi Manders e-mail: [naomimanders0@gmail.com](mailto:naomimanders0@gmail.com)

**Breezy Loop Boyds, MD** an easy hour and 15 minutes.  
Naomi Manders e-mail: [naomimanders0@gmail.com](mailto:naomimanders0@gmail.com)

**Cactoctin Mountain Park and Little Bennett**  
Marilynn Miller (301) 898-7274

**Croom, Md area, South of PG Equestrian Center**  
I am the trail historian for this area. I can keep you riding over different trails for 6 hours! People would leave from my farm in Croom & can ride to Patuxent River Park (Jug Bay), the Wildlife Sanctuary and Spice Creek Park. I am available Fri-Sat-Sun-Mon as a tour guide.  
Carol [CAAuletta@aol.com](mailto:CAAuletta@aol.com) or (301) 579-2342

**EPIC Trail at Dry Seneca Creek, Poolesville**  
This is mostly private with a sanctioned public route - exceptionally good footing, easy trail, good for exercising in winter. THIS IS NOT THE Great Seneca Greenway Trail that goes to Patuxent! 10 miles round trip  
Naomi Manders e-mail: [naomimanders0@gmail.com](mailto:naomimanders0@gmail.com)

**Gunpowder State Park at Sweet Air (Harford County)**  
Karen Penharlow, (410) 236-9365 or [KlawPaws@aol.com](mailto:KlawPaws@aol.com)

**Gunpowder State Park (Harford County)**  
Joyce Browning (410) 557-6165 / (443) 966-0249

**Little Bennett Park**  
Jim and Maureen Henry (301) 371-4868.

**Montgomery Agricultural History Farm Park and Annapolis Rock** Deneen Martin (301) 253-2955

**Patuxent River State Park, Rachel Carson and Rock Creek Park,** Laury Lobel  
(301) 774-9595 or [laurylobel@verizon.net](mailto:laurylobel@verizon.net)

**Patapsco State Park off Marriotsville Road**  
Elizabeth Baran  
She is available during the week and weekend and would love to show other TROT members the trails.  
H: (410) 442-5006 C: (410) 245-8942

**Sugarloaf Mt.** Vicki Bazan (301) 831-8715

**Sugarloaf Mt.** Janine Borofka (301) 874-0770

**Union Mills/Kowomu Trail**  
Also Liberty Reservoir trails [off Deer Park Road] and Morgan Run Trails.  
Ivy Smink (410) 875-5691 or [ivysmink@qis.net](mailto:ivysmink@qis.net)

**Woodstock Equestrian Park in Beallsville, MD**  
Karen Kraushaar (301) 208-0767 or [kraushaar@verizon.net](mailto:kraushaar@verizon.net)

If you would like to volunteer to show other TROT members your favorite trails contact:  
Nancy Osgood at [nlosgood@verizon.net](mailto:nlosgood@verizon.net)

## LOOKING FOR RIDING BUDDIES and NEED A RIDE/SHARE A RIDE

This section of the Newsletter is for folks who are looking for riding partners – either for meeting up on the trail or for sharing a trailer ride. Linking up with other trail riders is fun – and economical! We want to provide a forum space for people looking for a traveling partner, so please write to the TROT Newsletter at [nlosgood@verizon.net](mailto:nlosgood@verizon.net).

**Do you have a second horse?** I'm a new member of TROT and very interested in joining in on some of the trail rides, but I'm only leasing a horse right now and he doesn't trailer very well. Also, I don't have my own trailer. So I am interested in any members who might have a second horse they'd like to get out and about on the trails. I'd be happy to share expenses, etc., and I do have my own tack.  
Donna Kinsella [kingsgold@aol.com](mailto:kingsgold@aol.com)

**Share a ride:** Well behaved, easy loading 10 y/o paint gelding and his owner would love to rideshare (and pay gas) to TROT rides. Located off hwy 301 in Upper Marlboro. Call or text 240-547-8618 or email [ellen.lichtenstein@gmail.com](mailto:ellen.lichtenstein@gmail.com). Also welcome visitors to my trail-accessible farm for weekend rides. 5/11

**Looking for a horse** to go on TROT rides. I would like to ride your horse (if you have an extra one) on a TROT trail ride. I rode for 20 years, but have not recently. I am in the Ellicott City/Catonsville area. I would be happy to share all expenses. Contact: Susan Doukas 443-842-0811 . email: [sdoukashorse@yahoo.com](mailto:sdoukashorse@yahoo.com) 5/11

**Hi There!** I recently joined TROT but am one of those unfortunates who does not own a trailer (yet). In the meantime, I am trying to get my guy (Wiley Boy) out and about as much as possible on the trail. Here is the address where he currently lives (boarded) and my information should someone like to pick us up to go for a ride. Current Coggins if needed.  
Lynn Mozolic, 301-367-4971, [Lynnmozolic@aol.com](mailto:Lynnmozolic@aol.com)  
Deer Creek Farm, 6717 Mink Hollow Rd, Highland, MD 20777

**Looking for Riding Companion:** I have 2 wonderful, uncomplicated QH & fabulous trails. I am looking for a person who would **basically like a free lease** & join me in some wonderful ride time. I am in the Upper Marlboro/Croom area (near PG Equestrian Center).  
[caauletta@aol.com](mailto:caauletta@aol.com) 7/11

**Looking for Riding Companions:** I would like to meet up with a reliable riding partner either in or willing to journey to the Poolesville, Maryland area. I will supply  
(Looking continued on page 9)



## Who's Who in TROT

<b><u>OFFICERS</u></b>			
<b><u>President</u></b> Ron MacNab (301) 622-4157 <a href="mailto:rmacnab@comcast.net">rmacnab@comcast.net</a>	<b><u>Vice President</u></b> Pat Talbott (301) 704-3871 <a href="mailto:tallvhotazz@aol.com">tallvhotazz@aol.com</a>	<b><u>Secretary</u></b> Judy Thacher (301) 943-5298 <a href="mailto:jathacher@yahoo.com">jathacher@yahoo.com</a>	<b><u>Treasurer</u></b> Susan Railey <a href="mailto:susanrailey@verizon.net">susanrailey@verizon.net</a>
<b><u>BOARD MEMBERS</u></b>			
Beverly Fox <a href="mailto:Bevfox@embarqmail.com">Bevfox@embarqmail.com</a>	Susan Gray (240) 426-1655 <a href="mailto:susan@campsusan.com">susan@campsusan.com</a>	Kyle Jossi (301) 570-3860 Laury Lobel <a href="mailto:laurvlobel@verizon.net">laurvlobel@verizon.net</a>	Pat Oliva 410-489-7380 <a href="mailto:patolivatigger@aol.com">patolivatigger@aol.com</a>
Vera Fontana (301) 633-8372 <a href="mailto:fontanavera@yahoo.com">fontanavera@yahoo.com</a>	Priscilla Huffman <a href="mailto:priscillahuffman@verizon.net">priscillahuffman@verizon.net</a> (301) 646-4422	Pat Merson (301) 898-3251 <a href="mailto:lilgrevhrs@aol.com">lilgrevhrs@aol.com</a>	
<b><u>COMMITTEES</u></b>			
<b><u>Membership</u></b> Margaret Scarff <a href="mailto:mdanews@aol.com">mdanews@aol.com</a>	<b><u>Newsletter</u></b> Nancy Osgood/Sim Shanks <a href="mailto:nlosgood@verizon.net">nlosgood@verizon.net</a>	<b><u>Trail Maintenance</u></b> Amy Kimble <a href="mailto:AmyHKimble@aol.com">AmyHKimble@aol.com</a>	<b><u>Web Master</u></b> Harold Goldstein <a href="mailto:mdbiker@goldray.com">mdbiker@goldray.com</a>
	<b><u>Trail Rides</u></b> Lisa Troutman <a href="mailto:cat.home@verizon.net">cat.home@verizon.net</a>	<b><u>Mapping Project</u></b> Ron MacNab <a href="mailto:rmacnab@comcast.net">rmacnab@comcast.net</a>	
<b><u>COUNTY</u></b>			
** = Coordinators * = Contacts	<b><u>Charles</u></b> **Dr. Kathy Blanche (240) 320-4385 <a href="mailto:jbservs@peoplepc.com">jbservs@peoplepc.com</a>	<b><u>Prince George's</u></b> **Lynn Gullely (410) 707-8094 <a href="mailto:equinedesigner@gmail.com">equinedesigner@gmail.com</a>	<b><u>Washington</u></b> **Susan Rechen (301) 298-4119 <a href="mailto:rechen@si.edu">rechen@si.edu</a>
<b><u>Anne Arundel</u></b> **Diane Ayers (410) 551-0832 <a href="mailto:dianeayers@verizon.net">dianeayers@verizon.net</a>	<b><u>Fredrick</u></b> **Pat Merson (301) 898-3251 <a href="mailto:lilgrevhrs@aol.com">lilgrevhrs@aol.com</a>	<b><u>Fairland Regional Park</u></b> *Mary Angevine (301) 937-0014	<b><u>Wicomico County</u></b> **Shawn McEntee (410) 749-2665 <a href="mailto:smc1159@verizon.net">smc1159@verizon.net</a>
<b><u>Baltimore</u></b> Vacant	<b><u>Harford</u></b> **Karen Penharlow (410) 236-9365 <a href="mailto:KlawPaws@aol.com">KlawPaws@aol.com</a>	<b><u>Broad Creek Hist. District</u></b> *Dave Turner (301) 292-6130	<b><u>Virginia</u></b>
<b><u>Calvert</u></b> Vacant	<b><u>Howard</u></b> **Pat Oliva (410) 489-7380 <a href="mailto:patolivatigger@aol.com">patolivatigger@aol.com</a>	<b><u>St. Mary's</u></b> **Kathy Glockner (301) 475-1941 <a href="mailto:kglockner@md.metrocast.net">kglockner@md.metrocast.net</a>	<b><u>Front Royal</u></b> *Karen Young (540) 635-5136 <a href="mailto:karen@friesianfields.com">karen@friesianfields.com</a>
<b><u>Carroll</u></b> **Anne Bennof (301) 829-0949 <a href="mailto:trotfour@aol.com">trotfour@aol.com</a>	<b><u>Montgomery</u></b> **Ron MacNab (301) 622-4157 <a href="mailto:rmacnab@comcast.net">rmacnab@comcast.net</a>	<b><u>Talbot</u></b> Vacant	<b><u>Upper Shenandoah Valley area</u></b> *Karen Young (540) 635-5136 <a href="mailto:karen@friesianfields.com">karen@friesianfields.com</a>
<b><u>Cecil</u></b> **Jeanne Bond <a href="mailto:halcyonfarm1@hotmail.com">halcyonfarm1@hotmail.com</a>			

(Looking continued from page 8)

one of my horses and tack. All the rider needs to do is wear weather-suitable clothing, boots and a helmet and be prepared to walk/trot for one to four hours depending upon the fitness of the horse. More than one rider may be part of the schedule as I ride every day and not everyone has that kind of time. I ride most weekends and weekend riding involves taking two horses out, then returning to my farm and picking up the other two. During the week I ride Monday, Tuesday, Thursday and Friday in the mornings (and sometimes start in the dark) as I don't turn on my laptop to start work until 9:00am or so. On Wednesday I

ride from 4pm until dark.

I primarily ride on the C&O canal and occasionally at Woodstock or Sugarloaf Mountain. I also live on a 215 acre farm where we can also ride depending on the hunting seasons. I have a diverse group of horses (Shire/Drum, Haflinger, Appendix and Kiger Mustang) and all are quiet and dependable....they just need miles as two of them are being legged up for endurance.

Please reply to my email if you're interested:  
[RuthAnneHeilgeist@yahoo.com](mailto:RuthAnneHeilgeist@yahoo.com)

1/12

The BIG EVENT for Horse Enthusiasts!.....



# HORSE WORLD EXPO

2  
Great  
Locations!



Friday: noon-8pm  
Saturday: 9am-7pm  
Sunday: 9am-5pm



Thursday: noon-8pm  
Friday: 10am-8pm  
Saturday: 9am-8pm  
Sunday: 9am-5pm

- Retail Trade Show - Hundreds of Vendors Selling a Variety of Horse Products/Services for All Ages and Every Discipline
- Stallion Avenue
- Mounted Demonstrations
- Parade of Breeds
- Educational Seminars

New

## TRAIL OBSTACLE COMPETITION

Join the fun - MD and PA!

### CLINICIANS\*

Linda Allen	Hunters, Jumpers, Course Design	PA
Jen Bajackson, LGPC	Equine Assisted Therapy	MD
Jec Aristotle Ballou	Dressage, Fitness	MD, PA
Jennifer Bauer	Gaited Horses	MD
Lorrie Bracaloni	Equine Therapies, Pain Release	MD, PA
Stephen Bradley	Eventing	MD
Brenda Brown	World Wide Riding Adventures	MD, PA
Dana Bright / Anne Council	Driving	MD
Rebecca Douglass	Equine Acupuncture, Rider Balance	MD
Dianne Eppers	Western Pleasure, Showmanship	MD, PA
Janet Geyer	Equine Nutrition	MD, PA
Julie Goodnight	General Training	PA
Kenny Harlow	General Training, Problem Solving	MD, PA
Sandy Hart-Long	Arena Footing Solutions	MD
Cathy Hill	Drill Teams	PA
Anita Howe	Gaited Horses	MD, PA
Mike Hughes	General Training	MD, PA
David Kaden	Saddle Fitting	MD
Nick Karazissis	Hunter, Jumper, Equitation	MD
Colleen Kelly	Rider Biomechanics	MD, PA
Bill Kitsch	Farm Financing	PA
Nettie Liburt, V.M., Ph.D.	Equine Nutrition	MD, PA
Shelly Liggelt	Riding Aside	PA
Patty Lynch	Balanced Hoofcare	MD
Jim McDonald	Competitive Trail	MD
Jeannie McGuire	Gaited Horses	PA
Guy McLean	General Training	PA
Julio Mendoza	Dressage	MD, PA
Courtney Molino, EQUESTRIAN COACH	Equine Massage Therapy	MD
Dan Moore, DVM	Natural Equine Healthcare	PA
Jennifer Moshier	Western Pleasure, Hunter Under Saddle	MD
Anne Moss / Jeanne Whitel	Riding Aside	MD
Suzanne Myers, V.M., Ph.D.	Natural Horsemanship, Problem Solving	MD, PA
Gigi Nutler	Dressage	MD
Erin Ochso	Horse Rescue, Unwanted Horse Issues	MD, PA
Terry Peiper	Rider Biomechanics	PA
Gina Perilla	Saddle Fit	MD
Penn. State University	Various Educational Topics	PA
Curtis Pierce	Driving	PA
Stewart Pittman	Retired Racehorse Training	MD, PA
Scott Purdum	General Training	MD, PA
Debra Racheter	Saddle Fitting	PA
Aaron Ralston	Reining, Working Cow Horse	PA
Dr. Frank Reilly	Equine Insulin Resistance	MD, PA
Danea Rudy	General Training, Problem Solving	PA
Neva Kittrell Scheve	Trailer, Truck Safety	MD
Brenda Senseney	Endurance, Competitive Trail Riding	MD
Axel Steiner	Dressage	PA
Angelo Telatin	Equine Psychology, Jumpers	MD
Lizzy Traband	Trick Riding, Hunter, Juniors	MD
Tommie Turvey Jr.	Trick Horse Training	PA
University of Maryland	Various Educational Topics	MD
Brooke Vranj	Horse Rescue, Unwanted Horse Issues	MD, PA
Regina Welsh	Steeplechase Racing	MD
Bud and Gwen Wills	Horse Camping, Trail Riding	PA
Keith Wills	Farm Financing	MD
Brandan Wise	General Training, Reining	MD, PA
Jim Wofford	Eventing	PA
Trey Young	Horsemanship, Roping	MD

And many more...

Clinician list not complete at press time.  
\*Clinicians may not appear all days of the show.  
See our website for complete lists, exact dates and times.

## Theatre Equus

A Musical Equine Revue

In conjunction with the Pennsylvania Expo only

### SEMINARS AND DEMONSTRATIONS BY:



Linda Allen



Stephen Bradley



Julie Goodnight



Nick Karazissis



Guy McLean



Aaron Ralston



Angelo Telatin



Tommie Turvey Jr.



Jim Wofford

### SPONSORED BY:

Farm Credit • Days End Farm Horse Rescue • Downunder Horsemanship  
Legacy Vanners • Emge Equine Services • Fleenor Gates  
F.I.C.S. of Maryland • The Equiry • The Pennsylvania Equestrian

EQUESTRIAN PROMOTIONS, INC. • P.O. BOX 924 • BEL AIR, MD 21014  
301-916-0852 • Fax 301-916-0853  
www.horseworldexpo.com • info@horseworldexpo.com





## CLASSIFIED ADS

To place an ad email: [nlogood@verizon.net](mailto:nlogood@verizon.net)  
TROT Members: One regular (100 word) ad FREE!

<b>Non-member rates:</b>	-1/4 page ad -	\$25
-Classified ads -	-1/2 page ad -	\$40
\$6.00 for first 100 words	-full page ad -	\$75
\$0.10 for each additional word	-Insert (all copies delivered to our printer) -	\$50
-Business Card -		\$6.00

### BOARDING, HORSE PROPERTY

**Brookeville, MD: full care field board** on 95 acre farm with access to Rachel Carson, Hawlings River and Patuxent trails. Includes feeding, hay, worming, blanketing, handling for regular vet and farrier. Group turn-out, large fields, run-in sheds, safe fencing, round pen. \$225-275/mo depending on feed needs. Limited space available.

**Horses for lease** Several horses available for lease: 1) 15.2 H, paint geld. Uncomplicated, easy ride. Great trail horse. 2) 16.2H, grey TB mare. Well schooled, hunts, jumps, trail rides. Different lease options available. Call 301-943-9975.

**Pony Pastures LLC**, located on route 28 between Dickerson and Point Of Rocks MD - boarding, lessons, training, leasing and sales. Short ride to C&O Canal and many trails. We are a small, private A Circuit facility with olympic standard pvc jumps, Morton barn with hot and cold running water, Personalized service for you and your horse, whether you just want to trail ride or compete professionally. For more information call Morgan on (240) 344-0345, email [info@ponypastures.com](mailto:info@ponypastures.com) or visit [www.ponypastures.com](http://www.ponypastures.com). Stall board offered at \$400 per month, field board at \$250 per month. See website for upcoming summer camps and clinics.

#### Equine Properties for sale:

- Custom built 4 acre home in Silver Spring. Horses are allowed. Detached garage has separate driveway and can be easily be converted back into a barn. Has loft, separate office, water and electric. Easy access to trails. Home has 5 bedrooms, 3 full baths. Gourmet kitchen. Views from home are private. Perfect set up for artist, car enthusiast or just horsing around. Cool off in the pool with tiki bar. Or enjoy the winter's by the 2 fireplaces. \$815,000
- Soon to be on the market - 6 acre ramblar with 4 bedrooms and 2 full baths. Barn has 3-5 stalls with tack room, electric and water. Board fencing. Backs up to trails. Home is located in Silver Spring.

For further info: Contact Vera Fontana 301-633-8372 or email [Vera@VeraFontana.com](mailto:Vera@VeraFontana.com)

**Affordable Horse Boarding** Available! 5 beautiful acres in Gaithersburg that include two pastures, a four stall stable barn with run-in shelters, tack room, hay loft, and water and electric. Property is nicely secluded with a natural spring and backs Seneca Creek State Park and riding trails. Full or partial board is available and pricing is negotiable. Location is off of Turkey Foot Rd in 20878 zip code. If interested call Steve at 703-887-1799. 11/11



### Potomac Riverside Stables

Poolesville, MD ([www.potomacriversidestables.com](http://www.potomacriversidestables.com))

(301) 972-8187

**"Trail Riding Heaven"** A top quality boarding & training facility also offering several well trained school horses for lease. Instruction and training for horses and riders, from beginner to advanced. Several instructors to choose from. Your instructor is also welcome. The stable is located on 400 beautiful acres adjoining the C&O Canal with 100s of miles of National Park trails. Personal quality individual care, large indoor arena, 3 outdoor arenas, large stalls, many other features for your horse's comfort: mats, fans, fly spray system, hot showers, unlimited free choice premium hay made on the farm. Your horse is given whatever he needs, *no limits*. We have several vacancies and very reasonable rates.

**Full quality care and self care.**

**Belle Cote Farm: Field board** available for adults on a private farm in Burtonsville, MD. Lighted outdoor arena and direct access to WSSC trails. \$300/mo. Prefer retired, semi-retired, or non-showing horses. Contact Debby at [Debby.Poole@Juno.com](mailto:Debby.Poole@Juno.com) or 301-641-9594



**West Laurel Stable - Horse Boarding at its best!** We are not a big, fancy, competitive show barn. We provide a friendly and relaxed environment for pleasure riding. You and your horse will feel very comfortable. Riders will enjoy the new 80 x 200 ft ring and access to miles of beautiful trails on the WSSC watershed (also known as the Rocky Gorge or Supplee trails). Your horse will enjoy the quiet landscape with rolling hills and nice pastures, and will receive excellent care by our dedicated staff. Come see our barn, conveniently located in West Laurel. Call John at 301-332-2688 to arrange a visit. \$425/per month stall board.

### HORSES - SALE, LEASE OR FREE

**Two horses for Lease or Half-lease:** (1) 17 hand Hanovarian gelding, gentle, for a somewhat experienced rider. He is ridden by my 12 and 15 year old daughters, non-spooky, very soft mouth, English or Western. (2) Dark bay Quarter horse gelding. Non-spooky - excellent for children or first time riders, soft mouth, can ride English or Western. Horses located at Kruhm Farm in Burtonsville, MD. Three different accesses to WSSC trails. For info call Carol at 240-447-5186 7/11

Several nice horses available for lease to adults, 21 years and older, on a private farm in Burtonsville, MD. Lighted outdoor arena, cross country field, and direct access to trails. \$175/mo. half lease. Different lease options are available. Contact Jennifer at [befarmgirl@hotmail.com](mailto:befarmgirl@hotmail.com) or call 301-641-8903 5/9

**Grey, Welsh-X Pony, Loves to Drive!** - Mare, 14-years, 12.0 hh. Super well-trained, traffic safe! UTD on everything. Voice and hand-signal trained. Loads, hauls, trims, worms, ties, sprays. No vices. Rides too! Sound, health records available. EZ-entry 2-wheel cart, custom harness, western pony saddle, bridle, and blanket goes with her! \$5000 Contact: Tiina Frost 410-635-8685 [bt1983@wildblue.net](mailto:bt1983@wildblue.net) 11/11

**HORSES - SALE, LEASE OR FREE (continued)**

**Horse for sale:** Registered 12 year old Missouri Fox Trotter sorrel mare. Will be 13, May 2012. Excellent health and ground manners with no vices. Needs confident, "alpha" rider because she can be strong willed. On the trail, she will do anything you ask and is not afraid of much of anything. Needs frequent riding (which I can't give her) to be at her best. Asking \$2500.

Contact Kate at [p99white@comcast.net](mailto:p99white@comcast.net) or leave a message at 301-948-0556. 1/12

**MISC. - TRAILERS, SADDLES, TACK, ETC.****Saddles for Sale:**

**Stubben Gaited Pleasure Saddle**, black, 20" seat and wide tree. These very comfortable, well made Stubben gaited saddles cost \$2,000 new; used ones are hard to find. Saddle is nicely broken in, with a few scuff and wear marks but overall in very good condition. Asking \$900 + Buyer pays shipping. Contact us at 301-972-7838 or email to [vandijim@aol.com](mailto:vandijim@aol.com). Pictures emailed upon request.

**Courbette English all purpose saddle**, 17" seat, medium tree. Marshall Spezial model made in Switzerland, brown leather on top, black underneath. This comfortable saddle has some wear marks but overall in very good condition. Asking \$500 + buyer pays shipping. Contact us at 301-972-7838 or email [vandijim@aol.com](mailto:vandijim@aol.com). Pictures emailed upon request. 9/11

**A fox hunting special:** Kingston Thoroughbred Deluxe 2-Horse Trailer with Dressing Room. I put in all the extras to make fox hunting and showing more fun. Included: 20-gallon water tank with pump and hose, varnished wood bar with cup holders, porta potty, folding canvas chairs in dark green to match trailer trim. Wheel blocks conveniently located on fenders, teak hand grips to hold when climbing onto trailer fenders for mounting, non-skid surface on fenders. Always kept inside so condition is like-new. \$9,900 or best offer. Call or email Tyler 301-926-2191 or [mgrfarm@verizon.net](mailto:mgrfarm@verizon.net) 9/11

**1997 Merhow 2-horse slant-load bumper-pull trailer** with tack room and carpeted dressing room. Ramp, roof vents, rubber mats, padded stall divider, emergency exit door and drop-down windows. Very solid and tows like a dream! \$5,000.

**Round Pen Panels:** Nine 12 ft. long, Two 10 ft. long. One 6 ft.-wide horse walk-through gate. All gray powder coated; all 5 ft. high. Connect with loops and chains - safe and excellent on uneven ground. \$1200 new; asking \$600. Call 301-447-6911 or email [calvin@haxtonranch.org](mailto:calvin@haxtonranch.org)

**For Sale:** used RO-TO harrow. In good condition. Great for riding rings. needs teeth. \$500 or best offer. FMI, please call Margaret Scarff at 410-692-6921. 5/11

**For sale:** 2006 Brenderup Horseliner trailer. The first owner used it 3 x and I have used it 2x, It is in excellent condition. Asking price is \$6000. Call Kathy at 301-776-8954.

**SERVICES****House, Horse and Pet Sitting Service**

Care, Loving and Concern for your pets in the comfort of your home. I take care of them all, Big and Small.

Pat Talbott 301 704 7339

5/11

**"Master Electrician" Licensed and Insured**

John A. Spigler

Old Mill Electric

Mount Airy, MD 21771

(240) 793-3330 or Home (301)703-4167



202.321.2583

[Elizabeth@EquineSmile.com](mailto:Elizabeth@EquineSmile.com)

*Restoring oral biomechanics to enhance overall performance.*

**For All Your Real Estate Needs**

*Vera Fontana*

Representing Buyers, Sellers & Investors  
Since 1990

**Evers & Co. Real Estate, Inc.**

[Vera@VeraFontana.com](mailto:Vera@VeraFontana.com)

301-633-8372 Direct Line

3/11



Equine and Canine Massage Therapy

**Katie King**, ESMT, CMT

703-909-9164

[happyhorseandhound.com](http://happyhorseandhound.com)

Serving Maryland,  
DC, and Virginia

Come **buy your next Truck** from your Local Equestrian Sales Specialist and Fellow TROT Member, Ashley Adams at Keene Dodge Chrysler Jeep! We specialize in Trucks! Also, we service and perform body work on Horse Trailers. Ask me about the Rebates available to USEF, NTRA, and Farm Bureau Members! We are centrally located in Jarrettsville, MD. Call me at (800)394-7127 or (443)506-2263 or e-mail me at [aadams@keenedodge.com](mailto:aadams@keenedodge.com). [www.keenedodge.com](http://www.keenedodge.com)





# Annual Membership Application

\_\_\_\_\_ New Membership

\_\_\_\_\_ Membership Renewal for Year 2012

\*Name of Applicant (PLEASE PRINT) \_\_\_\_\_

Spouse/Sig Other \_\_\_\_\_ Other family members \_\_\_\_\_

\*Address \_\_\_\_\_

\*City \_\_\_\_\_ \*State \_\_\_\_\_ \*Zip \_\_\_\_\_

\*County \_\_\_\_\_ \*E-mail \_\_\_\_\_

\*Home Phone \_\_\_\_\_ Cell/Alternate hone \_\_\_\_\_

\* *Required information. Most, but not all of our communications with members is done by email.*

*Please circle any information you do not want included in our Membership Directory. All membership information is for the private use of TROT members. We do not release any membership information outside this organization.*

Annual membership rates for January 1 – December 31:

One year membership	\$20.00 per year	<input type="checkbox"/> Single	<input type="checkbox"/> Family
Contributing member	\$30.00 per year	<input type="checkbox"/> Single	<input type="checkbox"/> Family
Sustaining member	\$50.00 per year	<input type="checkbox"/> Single	<input type="checkbox"/> Family
Additional contributions	\$ _____ (tax deductible)		

Number of membership cards required \_\_\_\_\_

*Membership is for the calendar year. All individuals included in a family TROT membership must be members of the same family living at the same address. Additional contributions are welcome and help to preserve the trails you ride on.*

*TROT is a tax exempt, nonprofit organization and contributions are tax deductible.*

Please make checks payable to Trail Riders of Today and send this form and your check to:

**Margaret Scarff, TROT Membership**  
**4406 Carico Lane, White Hall, MD 21161**

Phone: 410-692-6921 (home) 410-459-0798  
(cell) Email: [TrotMembers@hotmail.com](mailto:TrotMembers@hotmail.com)

I prefer to receive the TROT Newsletter by:

\_\_\_\_\_ U.S. Mail or \_\_\_\_\_ email (full color edition)

\_\_\_\_\_ Neither, I will view it on the TROT website.

## **VOLUNTEER**

WE NEED YOUR HELP! Please check any areas where you would be willing to assist.

<input type="checkbox"/> Public Hearings	<input type="checkbox"/> County Coordinator	<input type="checkbox"/> Advertising	<input type="checkbox"/> Ride Leader
<input type="checkbox"/> Fund Raising	<input type="checkbox"/> Booth / Shows	<input type="checkbox"/> Trail Mapping	<input type="checkbox"/> Newsletter
<input type="checkbox"/> Membership Mtgs	<input type="checkbox"/> Trail Clearing	<input type="checkbox"/> Website	<input type="checkbox"/> Judged Pleasure Ride
<input type="checkbox"/> Photography	<input type="checkbox"/> Membership	<input type="checkbox"/> Annual Dinner/Silent Auction	

*Rev. 10-09-2011*



## **The Back Page**

*from the Newsletter Staff*

**Don't miss the TROT Annual Meeting – Potluck Dinner and Silent Auction – February 11, 2012, at 6:00 pm at the Mt. Airy Fairgrounds.** Read all the details inside. If you have never come to the annual meeting, you need to try it this year! We have a lot of fun, and we guarantee that you will meet other people that share your equestrian passion! There is great food and some great deals at our Silent Auction! See pages 1 and 3.

**New Board Members are being sought.** Have you ever wanted to get more involved in some of TROT's activities? Why not become a TROT board member? No experience is necessary – just a small commitment of time and the desire to support the organization and its activities. Please read the President's Message on page 2.

Remember that TROT will be at the **HORSE WORLD EXPO** at the Timonium Fairgrounds, January 20-22, 2012. See the full page ad on 10.

**RENEW YOUR TROT MEMBERSHIP.** Dues for 2012 again remain an incredibly low \$20 per year for an individual or a family. Show your support for preservation of equestrian trails. Be sure to fill out the application and send it in. Don't forget to indicate your preference for Newsletter format (hard copy or electronic). *See page 6 and the Annual Membership Application on page 13.* You can also renew your membership online using PayPal. See page 3



## **TRAIL RIDERS OF TODAY**

**Margaret Scarff, TROT Membership**

**4406 Carico Lane White Hall, MD 21161**

First Class

**Inside  
This  
Issue  
page 1**